

FOLK AROUND THE COAST - OCTOBER 2011



FOLK FROM FURTHER FIELDS

G'day Folks,

It's that time of year again and, understandably, most of this month's news is about the Fleurieu Folk Festival. This year's program is shaping up as the most diverse presented so far – there's traditional Australian, Irish, Scottish, Blues, Bluegrass, Appalachian, Quebecois, Comedy, Singalong, Poetry, Storytelling, Contemporary Folk, Folk Rock, Alternative, Acoustic, Belly Dance, Clogging – you name it, it's there! Now in it's fifth year at Willunga, the festival has grown into a significant regional event that rates alongside any festival in the country and entices people from all over Australia to come and perform here along with many of our finest local performers. Another encouraging highlight is the ever increasing number of young acts who are “leading the charge”. Despite it's size we've managed to keep it a very low-cost event – there's only a small general entry charge of \$15 for the Friday evening and \$20 per day for the Saturday & Sunday, without which the festival would be unsustainable. If you're going for the weekend it's even better value to buy a weekend pass for \$40 – a saving of \$15 – that get's you into everything for the whole weekend.

Let's not forget that it's only possible to put it all together with some great support from sponsors, government arts funding, the local Willunga community & businesses, an army of volunteers, a dedicated and hardworking organising committee, the many performers who have donated their services or are playing for a minimal fee and you, the people who come along and make the festival what it is – a celebration of folk music in South Australia. The organising team – Valerie Corfield, Jon Eykelkamp, Josie Eykelkamp, Jan Foreman, Jeri Foreman, Dave Greenslade, Moira Hendry,

(Continued on page 2)

(Continued from page 1)

Mike McGuire, Annie Thornton and myself - wish everyone a great time at the Festival. See you there!

Keep Folking!

Pete.



FOR SALE

Emerson Model 1E Silver Flute for sale, in own case complete with original guarantee, excellent condition. \$450.00 ono. Contact Carol between 9am - 5pm (Mon.-Sat.) on 8278 4210 or on mobile 0400 308 727.

TRAD&NOW MAGAZINE

Trad&Now is Australia's National folk magazine and features articles and anecdotes, songs & tunes, Festival news, folklore, reviews, information on traditional & contemporary folk music and reports on live performances. The new format Trad&Now is now issued monthly, costs only \$4.90 and is now available at **Colonnades Newsagency**, **Noarlunga Centre** or by direct subscription. You can find more information online at: <http://www.tradandnow.com>

South Coast Folk Club on Facebook



South Coast Folk Club now has an official Facebook Page so now it's even easier to connect with people and share ideas. You'll be able to create and join in discussions, read 'instant' news items, see what events we're putting on during the year, follow the exploits of your favourite South Coast Folk Club performers, watch videos, etc.

You can also become a "Fan of the South Coast Folk Club", so why not join up now at:

<http://www.facebook.com/southcoastfolkclub>

SOUTH COAST GIG GUIDE



During the coming weeks groups associated with the club, or with folk in the south, can be seen in public performance at the following venues:

WEEKLY:

Every Tuesday – **THE SCALLYWAGS**—8pm to 11pm:
Celtic Music Session, Dan 'Connell's Pub, 165 Tynte St., North Adelaide.

Every Wednesday – **CELTIC CONNECTIONS SESSION** -
7.30pm 'til late: Mick O'Shea's Irish Pub on Main South Rd, Hackham

Every Thursday - **SOUTH COAST FOLK CLUB** - from 8pm 'til late:
Port Noarlunga RSL, cnr Esplanade & Castleton Ave., Port Noarlunga.

*****FFF2011 Preview Concert - Thurs 20th Oct*****

MONTHLY:

WILLUNGA FOLK SESSION - -**Sunday 27th Nov. 2011**
– 2pm to 5.00pm - Willunga Peacock Farm. Lot 80 Norman Road, Willunga.

THE ACOUSTIC PEACOCK – A fantastic music venue supporting original artists - Willunga Peacock Farm, Lot 80 Norman Road, Willunga.

Fri. 11th Nov. 2011 . (see ad - pg. 8)

FERN FOREST NURSERY – A new venue in Willunga featuring acoustic-style performers – Friday November 4th features **TATTIE JAM from Scotland**. 8pm start – 175 Main Road Willunga. **(see ad - pg. 9)**

SINGING GALLERY MUSIC CLUB—Meets on the 1st Friday evening of each month at The Singing Gallery, 133 Main Road, McLaren Vale.

YAM (Yankalilla Acoustic Music)- 3rd Saturday of the month
Contact Ph: Ian Main: 0439 861 001 or Email: ianmainevents@gmail.com
(see ad - pg. 11)



Ryebuck Sheila's at the Alexandrina Cheesery in SPRING!

Time 1-3pm - Dates: Sunday 9th October, Sunday 20 November
(see ad - Pg. 10)

FREE ENTRY: Bookings Essential: (08) 8554 9666
Syned Road, Mt. Jagged
Via Mt. Compass

SCFC CONCERT NIGHT – Thursday 20th October

FFF2011 Preview Concert – Fresh Folk at Fleurieu

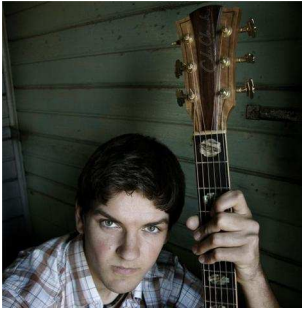


Lucy Wise spent her childhood singing with her family in the Wise Family Band in WA and from a young age has played at folk festivals in Australia and internationally. Currently living in Melbourne, she is now amongst the most renowned young players and songwriters in the Australian folk music scene.

Accompanying herself on guitar, ukulele and Appalachian dulcimer, her original songs are all about people, and the small things that illuminate everyday life, drawing influence from Appalachian and Irish Folk music. Her rich musical upbringing led her to pursue interests in a variety of stringed instruments, and she has performed and taught workshops Australia wide in fiddle, guitar, ukulele and singing. Lucy appeared at the 2010 Fleurieu Folk Festival as a member of String Theory and has been asked to return as a solo act this year – she is also a “Face of the Festival”.



Evan & Mischa are a Melbourne-based duo who have just released their debut instrumental EP after a year-long collaboration, exploring traditional Irish, American Old Time, Breton and Bluegrass music. Both musicians have a solid base in Celtic and associated traditional music styles. To this Evan adds his passion for Old Time music and Mischa, for Western Classical music. Mischa's whistle tunes are influenced by players such as Brian Finnegan (Flook) and Kevin Crawford (Lunasa), and his accordion playing draws on his study of Russian neo-classical accordion music and his involvement with Tango quintet 'Colectivo29'. Evan's sensitivity in accompanying traditional music is inspired by players such as John Doyle and Kris Drever. He is equally at home playing Celtic music on flute and whistle as he is playing old-time banjo music, which can be heard in the Appalachian String band, 'String Theory'.



Daniel Champagne Reaching to musical depth's far beyond his years and a way with the guitar that can only be seen to be believed, Daniel Champagne often sounds closer to a three-piece band than the 21 year old singer songwriter guitarist now established as a renowned performer on both the Australian and international stage. To quote the Firefly Column (San Francisco):

"Today I saw the future of Folk. Festival goers flocking in their thousands towards main stage to witness the young musical phenomenon from Australia dish out an absolute show-stopper at the evenings end. It's not often that what we are told in this industry is reality, but I can tell you ... the hype surrounding this kid is!"

(This is going to be a very popular concert so make sure you're early to get a good seat!)

Concert starts at 8pm - Admission is FREE - but there is a "compulsory" \$5 raffle. Please buy your raffle ticket/s as you come in so we can continue putting on high quality performers in concert at South Coast Folk Club !

**Our 2011
Concert Series
sponsored by the**



**City of
Onkaparinga**

South Australia's 2011
fleurieu folk festival



3 Days @ WILLUNGA
Fri 21st - Sun 23rd October
With some of Australia's
finest folk performers @
www.fleurieufolkfestival.com.au

2011 FLEURIEU FOLK FESTIVAL NEWS

Only 1 month to go! - This year's Festival is happening in Willunga on the 21st-23rd October 2011 – so put it in your diary now, tell all your friends, family, workmates or anybody you can think of and bring them along! And why not bring them along to a warm-up event at the Fern Forest Nursery? It's going to be a great concert, the first at Willunga's newest music venue - and it's a fundraiser for the Festival!

FOCUS ON YOUNG PERFORMERS

We've always had a strong youth program at the Festival and this year will be no exception! We've managed to attract some of the finest young performers from around Australia and boy, there will be some very skilful musicians on show! This year's program will feature a young fiddle player from each State in a "State of Origin Fiddle Project:", an event that will showcase some of the amazingly talent youngsters from around the country. Another initiative will be "Pop Gets Folked", where young songwriters will collaborate to take some pop songs and give them the "folk" treatment - there should be some interesting results! Of course, there will still be the usual variety of kid's entertainment and activities, including the Young Talent Quest (now featuring 2 age groups) - and under 15 year olds still get free admission when accompanied by a parent or guardian.

BECOME A VOLUNTEER AT THE FESTIVAL

One of the best parts of a folk festival is involvement. By volunteering, you will make new friends and obtain great satisfaction from ensuring everyone has an enjoyable and memorable time at the Festival. A good festival requires lots of volunteers and your skills and time will be highly valued. If you would like to join the Festival Team please visit the Festival website and download a volunteer registration form

-<http://www.fleurieufolkfestival.com.au/volunteers.htm> - or you can pick one up from one of the local southern folk sessions.

BILLETS REQUIRED

Due to the higher number of Interstate acts performing at this year's festival, we are looking for more people who would be willing to host some of our visiting performers. Billeting in Willunga itself is preferred but this is not

(Continued on page 7)

(Continued from page 6)

essential provided the artists can be transported to and from the accommodation (sometimes at quite early or late hours). Please phone Annie on 83272797 if you'd like to help out.

WHAT'S IT GOING TO COST?

Our organising team does listen to what you, the community, want from the Festival and each year we try to make improvements in an effort to make the event one of the best festivals of its type in the Country, as well as one of the most affordable. We've managed to keep entry costs to a minimum - this year there will be a general (wristband) site admission charge of \$15 per adult for Friday evening and \$20 per day on Saturday & Sunday. This gets you into all venues, including the major acts in the Festival Hall (stadium). There will also be an option to purchase a "season pass" for the whole weekend for \$40 (a saving of \$15). It's not free but it's ridiculously good value and as affordable an event you will find anywhere! Children will still get free entry to all events when accompanied by a responsible adult.

FLEURIEU FOLK AT THE WILLUNGA QUARRY MARKET SATURDAY 8TH OCTOBER - 9am to 1pm

Some of our intrepid volunteers will be operating an information/merchandise stall at the next Quarry Market, handing out flyers, promoting the festival, selling raffle tickets, etc. There will also be a few musicians there to play (acoustically) and give patrons a sample of what they might expect at the folk festival. Call in and say hello and get the latest news about what's happening at the festival.

FLEURIEU FOLK FESTIVAL "IN YOUR FACE"!

If you get a bit impatient waiting for this newsletter to arrive, why not visit our official Facebook Page. You'll be able to create and join in discussions, read 'instant' news items, see what events we're putting on during the year, follow the exploits of your favourite Fleurieu performers, watch videos, etc. You can also become a "Fan of the Fleurieu Folk Festival", so follow this link and join up now at: <http://www.facebook.com/fleurieufolkfestival>

FFF 2011 MAJOR RAFFLE

This is one of our major fundraisers for the festival and we need **your** help to

(Continued on page 8)

(Continued from page 7)

sell tickets. There are \$2000 worth of fabulous prizes to be won and it's still only \$2 per ticket! Raffle book will be available from now until the festival weekend so please take a book or two to sell to your friends, workmates, etc. Prizes for this year's raffle are:-

1ST PRIZE: Acoustic/electric guitar with heavy duty carry bag - value \$950

2ND PRIZE: 2 nights for 4 people at Jessica's Place B&B – value \$600

3RD PRIZE: 64Gb Ipod Touch from Radio Rentals – value \$400

4TH PRIZE: 1 case of Premium Aussie Cider - value \$50

Please support the Festival by coming along to as many promotional & fundraising events as you can – bring your family and friends as well and have a great time!

Lucky Squares – weekly at Celtic Connections at Mick O'Shea's & monthly at Willunga Folk Session.

***** ONLY 1 MONTH TO GO *****

The Acoustic Peacock

Adelaide's newest music club supporting original artists

November 2011 Events

Fri 11th: The Beggars

Support Act - Phil Noel

Bar Facilities and Meals provided (at extra cost)

Meal Bookings: Julie - 0402 333 844

Info. and Bookings (incl. Open Mic enquiries): Dave - 0405130910

Willunga Peacock Farm

Lot 80, Norman Road, Willunga

www.acousticpeacock.com.au

fleurieu folk festival

presents

TOMBSTONE STRING BAND

at the

Fern Forest Nursery

8pm - Friday 30th Sept

\$20/\$15

Open Mic - BYO nibbles & drinks (byo licence)

Pay at the door - for table bookings phone
Dave: 0405130910 or 85564038

Mini Auction - wines from Fox Creek & Coriole, vouchers
and a range of items from Willunga Traders - This is a
fundraiser for the 2011 Fleurieu Folk Festival.

175 Main Road Willunga - between McLaren Vale & Willunga

Ryebuck Sheila's at the Alexandrina Cheesery in SPRING!

Time 1-3pm - Dates: Sunday 9th October, Sunday 20 November

Spring has sprung, so it is time to get out in the sunshine, and enjoy Fiddles on the Farm at Alexandrina Cheese, please book a table by phoning the factory on T 8554 9666.

Be sure to pencil in the spring concert series dates, Sunday 9 Oct (second Sunday of the month) The Ryebuck's Sheila's take on a Scottish theme dedicated to all the Scottish ancestors who came to the Fleurieu Peninsula, and Sunday 20 Nov (third Sunday of the month) The Ryebuck's Sheila's take on Australian, American Old Timey & country music - some old favourites and singalongs.

Congratulations

to Rebekah and Mark on the birth of their first baby - Jozef, born on 7th Aug 2011....



“4 generations at the Alexandrina Cheesery!”



Club Y_{ANKALILLA} A_{COUSTIC} M_{USIC}

Part of the Yankalilla District Community Cultural Arts Network Inc.

Roots Music You Can Taste

OUR ACOUSTIC MUSIC RULE

If the power stops the music keeps going.
(Your instruments need to be able to be played without electricity.)

FACILITIES AND PERFORMANCES

Open microphone stage in the Supper Room equipped with a PA.
Blackboard concert format: Musos list names on arrival.
Performances: 25 minutes max.
Jamming around the campfire and in the foyer of the Hall.
B.Y.O. Food & Drink

WHEN

The 3rd Saturday of the month starting on 19 March 2011, from 7pm.

WHERE

Yankalilla Show Grounds. Half way between Yankalilla and Normanville on Main South Rd.

MEMBERSHIP

First two visits free as well as a few social visits Annual membership
\$20 Single \$30 Family.
Membership offers 9 music nights, free camping and it pays our rent.

CAMPERS

Text, phone or email Ian Main to confirm number of people camping, giving your contact details. Phone Ian for more details.

Ian Main: Phone 0439 861 001 Email ianmainevents@gmail.com

SOCIAL NETWORKERS

We are now a group on facebook. Just search for Club Yam and get involved.

EDITOR'S BLURB



This newsletter is issued free by the South Coast Folk Club. If you would like to have your name placed on the mailing list to have a copy sent to you each month free of charge, please see me at the club or forward your name and address/e-mail address to me - see below for contact details. Please indicate if you want an e-mail copy and if so, whether for viewing on screen, or printing out.

This current newsletter and the previous two months' are available for download from the club's web-site:

www.southcoastfolkclub.com.au/newsletters/

There is also an explanation of the difference between the version for reading on screen and that for printing out, and you can add yourself to the mailing list from the web-site.

Contributions, small or large, can be sent to:

The Editor

c/o - PO Box 300,

SEAFORD. SA 5169

or e-mailed to: ed@southcoastfolkclub.com.au

Closing date for the next issue is – Monday 24th October 2011.

Kath Kennedy

If what you wanted to read, or details of your event weren't included in this newsletter, then perhaps you forgot to tell me about it!

*Changed your ADDRESS or EMAIL ADDRESS LATELY -
Don't forget to drop me a line and let me know!!!!*

SOUTH COAST FOLK CLUB CONTACTS

Club Co-ordinator Peter Thornton 8327 2797

Newsletter Editor Kath Kennedy 0411 234 116

Website: <http://www.southcoastfolkclub.com.au/>